

Emphasis (60 credit hours)

Complete the following Core courses:

- HLTH 210 - Foundations of Public Health (3.0)
- HLTH 312 - Introduction to Planning, Interventions, & Evaluations (3.0)
- HLTH 313 - Introduction to Data Collection and Analysis (3.0)
- HLTH 314 - Health, Disease, and Their Determinants, Part 1 (3.0)
- HLTH 315 - Health, Disease, and Their Determinants, Part 2 (3.0)
- HLTH 316 - Influencing Health through Health Systems and Policy (3.0)

Complete the following Emphasis Core Classes:

- HLTH 345 - Principles of Epidemiology (3.0) *winter semester only*
- HLTH 440 - Intro to Statistical Computing in Epidemiology (SAS) (3.0)
- HLTH 447 - Intro to Biostatistics (3.0)
- HLTH 449 - Epidemiologic Study Design & Analysis (3.0) *fall semester only*
- HLTH 493 - Epidemiology Capstone (3.0) *winter semester only (capstone may be taken concurrently with HLTH 312 & HLTH 316)*

Complete the following support courses:

- STAT 121 - Principles of Statistics (3.0)

Complete one of the following support course options:

- HLTH 101 - Health and the Human Body (3.0)
- MMBIO 221 - General Microbiology (3.0)
- AND** CELL 220 - Human Anatomy (lab) (4.0)
- OR** CELL 210 - Human Anatomy (virtual lab) (3.0)

Complete 12.0 credit hours from the following courses

- BIO 264 - Stat Analysis for Biologists (4.0)
- HLTH 416 - Applied Clinical Data Systems for Public Health
- HLTH 434 - Advanced Evaluation Methods
- HLTH 482 - Medical Geography (3.0)
- HLTH 492R - Directed Public Health Readings (3.0v)
- MATH 112 - Calculus I (4.0)
- MATH 113 - Calculus II (4.0)
- MATH 116 - Essentials of Calculus (1.0)
- MATH 213 - Elementary Linear Algebra (2.0)
- MATH 215 - Computational Linear Algebra (1.0)
- SOC 300 - Methods of Research in Sociology (3.0)
- STAT 124 - SAS Base Programming Skills (1.0) *spring term only*
- STAT 230 - Analysis of Variance (3.0)
- STAT 234 - Methods of Survey Sampling (3.0) *fall semester only*
- STAT 240 - Probability and Inference (3.0)
- STAT 330 - Intro to Regression (3.0)

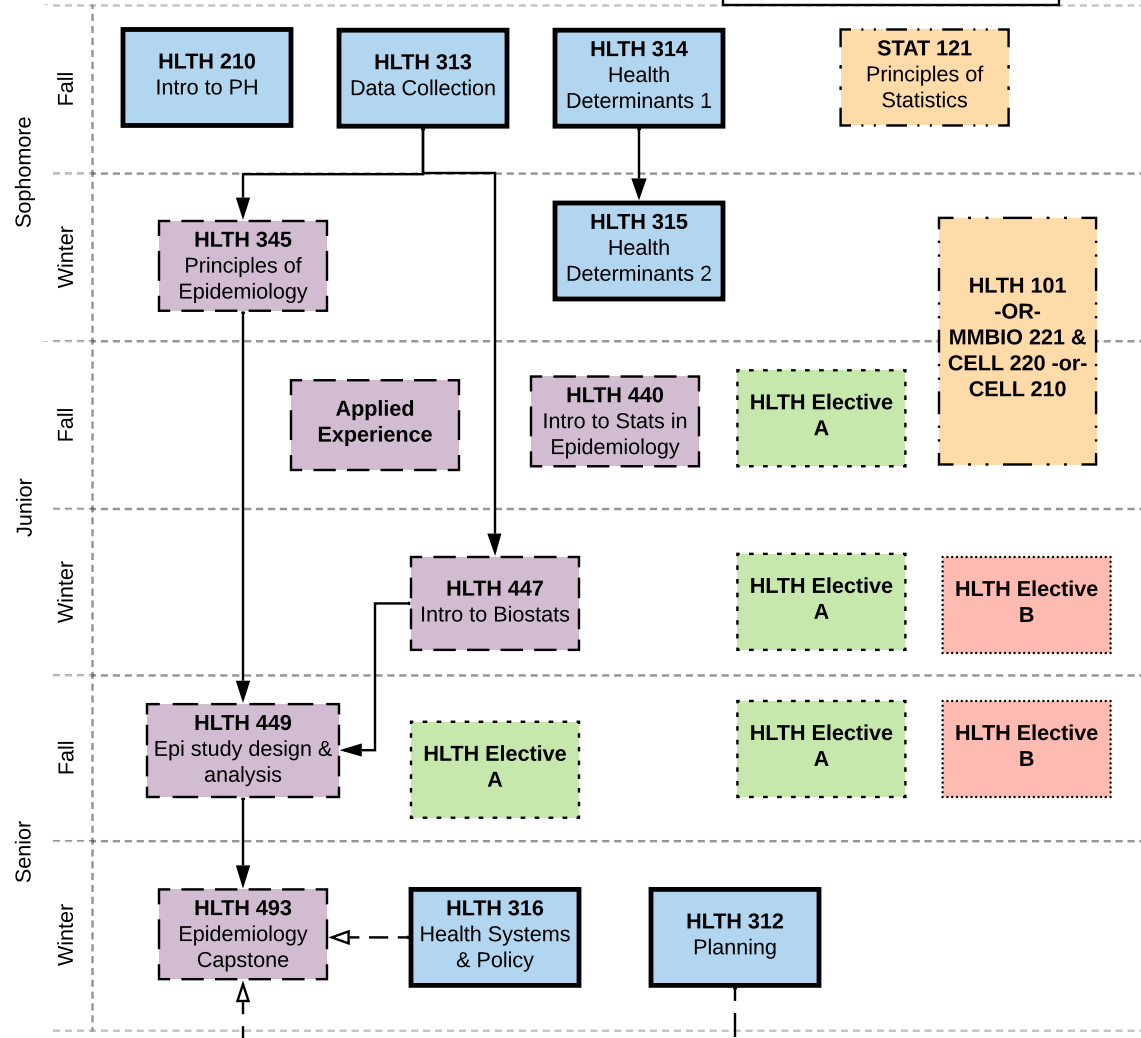
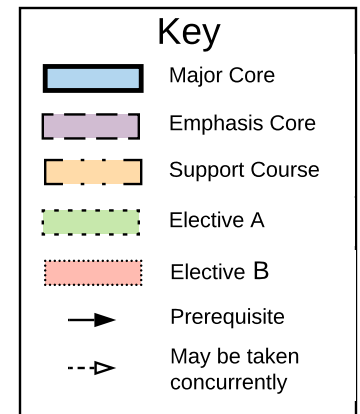
Complete 6.0 credit hours from the following courses:

- HLTH 322 - Environmental Health (3.0)
- HLTH 324 - Occupational Health and Safety (3.0) *fall semester only*
- HLTH 420 - Injury & Violence Prevention (3.0) *fall semester only*
- HLTH 422 - Disaster Response and Emergency Preparedness (3.0) *winter semester only*
- HLTH 426 - Environmental Toxicology (3.0) *winter semester only*
- HLTH 436 - Sexual and Reproductive Health (3.0)
- HLTH 450 - Women's Health Issues (3.0)
- HLTH 456 - Families and Public Health (3.0)
- HLTH 460 - Substance Use Disorders (3.0)
- HLTH 461 - Population Mental Health (3.0)
- HLTH 466 - Health and the Aging Process (3.0) *winter semester only*
- HLTH 480 - International Health (3.0)
- NDFS 201 - Nutrition & Prevention of Chronic Disease (2.0)
- NDFS 380 - International Nutrition (3.0)

Complete 3.0 credit hours from the following:

- Applied learning experience (3.0)

**Epidemiology Emphasis
Fall 2024
6 Semester Class Plan**



Department of Public Health Main Office 4103 LSB, public-health@byu.edu, phone: 801-422-3386
 Department Internship Questions: Stephanie Lutz, office 2060B LSB, stephanie_lutz@byu.edu, office phone: (801) 422-1943, cell phone (801) 830-1605
 Department Advising Questions: Beth Liechty, office 3002 LSB, beth.liechty@byu.edu, office phone: (801) 422-8950, cell phone (801) 602-7380